



# NEWSPEC GROUP

IT IS AT THIS MOMENT  
LIGHT IS DANCING ACROSS

# 走进 纽斯拜珂

---

纽斯拜珂是一家针对方块地毯研发、设计、生产的专业公司，2013年美国纽斯拜珂品牌到中国建立生产基地，目前在中国、悉尼、洛杉矶、雅加达、香港等地区设有市场营销团队，纽斯拜珂公司每年都会不断的更新产品设计风格，作为充满浓郁的个性化色彩的优质方块地毯生产商，以高信誉的品牌，给客户提供无限的可能，我们的商业品牌 Newspec, leeyea, Kulleroo 在过去的几年中，都表现出领先的个性风格和卓越的可持续性，体验纽斯拜珂的品牌和服务更能获得价值所在。



A person wearing light-colored trousers and dark leather shoes is walking on a dark, textured carpet. They are carrying a dark folder or bag under their left arm. In the background, a wooden table with a smartphone on it is visible.

## NEWSPEC GROUP

---

Newspec is a professional company that focusing on carpet tile research and development, design and production. In 2013, the American Newspec company set up a production base in China. Currently, there are marketing teams in China, Sydney, Los Angeles, Jakarta and Hong Kong. Newspec company would update design style every year constantly. As a high quality carpet tile manufacturer, with the high reputation of the brand, Newspec would provide limitless possibilities for customers. Moreover, our commercial brands like Newspec, leeyea and Kulleroo have shown their leading custom design and excellent environmental sustainability in the past few years. Our customers can derive value from experiencing Newspec brand and service.

# Environmental Sustainability

## 环境 可持续性

### Eco-Sustainable Production

Eco-Revive™

环保  
可持续发展  
生产线

With our constantly improving manufacturing technology, we have truly achieved zero emission that we completely eliminate discharging of wastewater & gas emission from the process.

Our products will not release any harmful substance during use and Volatile organic compounds (VOCs) are tested well below standard threshold.

通过对工艺的改进，真正实现了在过程中完全消除废水和废气的排放，达到了预期的标准。

我们的产品在生产过程中达到了零排放，不产生任何不可回收或降解的污染，并且在使用过程中不会产生任何有害物质。



Strict sustainable material sourcing



Zero emission throughout manufacturing process



Offcuts Re-entry Process



Environmental Certification

严格选用环保原材料

所有生产过程实现零排放

实行边角料再生循环利用



环境环保认证

Custom design based on  
project specifics

6000 sqm of  
manufacturing plant

Tufting and Precise Dye

Unique core production  
system designed by our  
technical, research team

Innovative manufacturing  
plant layout improves  
production efficiency

2 million sqm Annual  
production output

按需生产个性化定制

生产场地6000平方米

簇绒提花、数码喷射  
印花两大类系统设备

核心设备自行研发

科学的“U”字形生  
产布局

200万平方米年产能  
力



个性化

设计|制造

Custom Design

Custom Made





# Quality As one of our Core Value

优良的原材料供应商

规范的生产工艺标准

严格的成品检验流程

坚固的托盘包装物流

承诺品质保证15年

国际品质检测认证

Eco-raw material from leading certified supplier

Tightly controlled manufacturing procedure

Strict quality control process

Robust packaging and reliable freight

Product warranty of 15 years

International Quality and Sustainability Certifications

THROUGH CONTRAST OF COLOURS AND SHADES,  
BRINGS THE RELATIVITY OF MOTION.  
STAND STILL, IT'S YOUR FLOOR SHIFTING.

Leading development in hotel and residential modular carpets

Hygienic with ease of cleaning and spot replacement

Continuous pattern design with modular elements

Eliminate volatile adhesive use in hotel and residential installation

Achieve your design concept with less boundaries

率先研发酒店、家庭弹性底方块地毯

易清洗，易更换

大循环图案设计，连贯拼接效果

酒店、家庭铺装无需胶水

完美实现设计师创意设计

创 新 · 优 点

Advantages



# 產品

## 類別 尺寸

## Product Categories & Size

Tufted Solution Dyed Nylon Yarn with Hexbac™ Backing

Tufted Solution Dyed Nylon Yarn with ESC™ Elastic Backing

Infinity Dye™ Injection Post-Dyed Nylon Yarn with ESC™ Elastic Backing

Hexbac™ 硬底尼龙色纱提花方块地毯

ESC™ 弹性底尼龙色纱提花方块地毯

ESC™ 弹性底 Infinity Dye™ 数码印花方块地毯

---

50 cm×50 cm (19.7 inch×19.7 inch)

**Square**

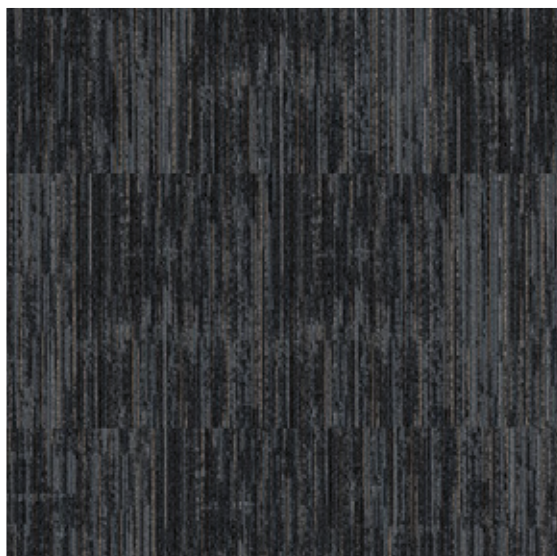
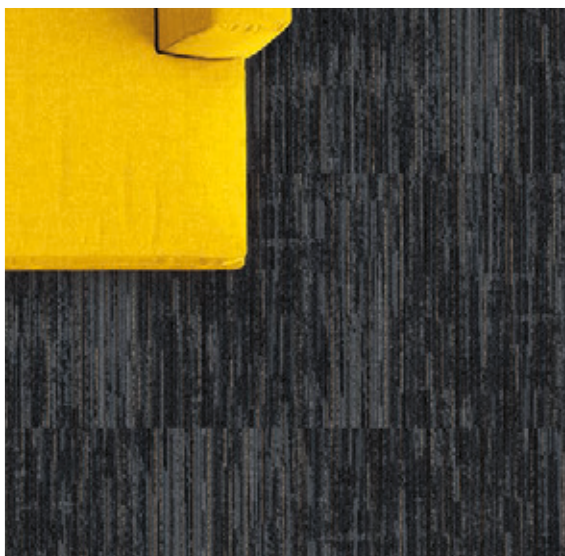
60.96 cm×60.96 cm (24 inch×24 inch)

91.44 cm×91.44 cm (36 inch×36 inch)

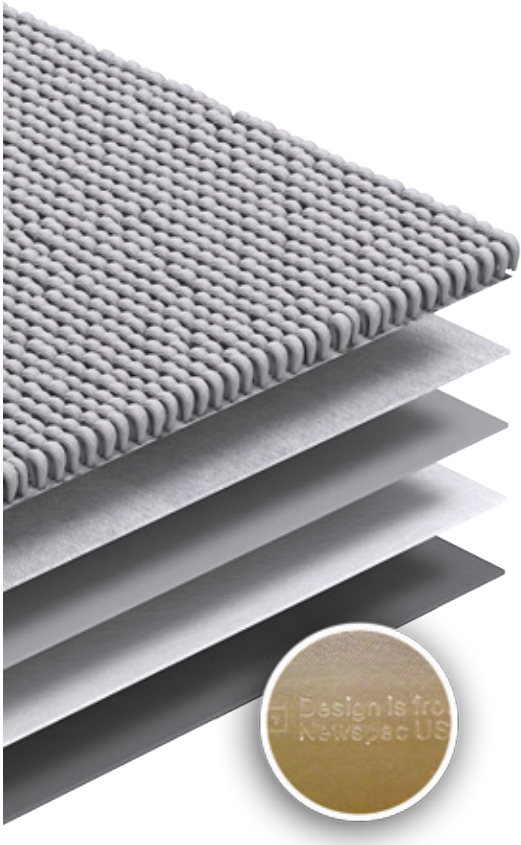
100 cm×100 cm (39.4 inch×39.4 inch)

30.48 cm×91.44 cm (12 inch×36 inch)

**Plank**



Hexbac™ 硬底



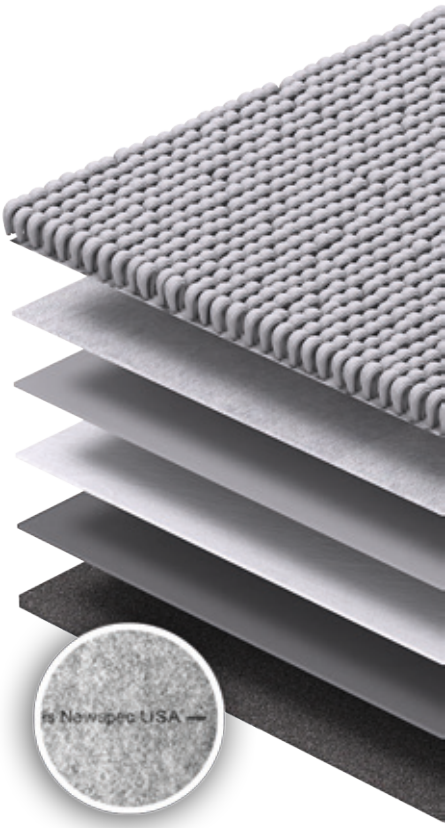
- Yarn + Blanket
- Non-woven
- Bonding Agent
- Fiberglass
- PVC Based Back

- 主材料PVC
- 脚感较硬
- 隔音保温
- 防霉抗菌
- Recyclable PVC Based
- Firm foot feedback
- Excellent acoustic and thermal Insulation
- Antimicrobial



BACKING OPTIONS

ESC™ Elastic Back 弹性底



- Yarn + Blanket
- Non-woven
- Adhesive Layer
- Fiberglass
- ESC Elastic Layer
- Cushion Back

- 主材料弹性PU
- 脚感舒适
- 隔音保温
- 不翘曲，不变形
- 防霉抗菌
- Polyurethane Based Formulation
- Relaxed foot feedback
- Superior acoustic and thermal Insulation
- Antimicrobial

# 應用領域

辦公室  
商用  
社區。教育  
。商場  
。酒店  
住家

## Application Area

Office. Retail. Commercial

Hospitality. Entertainment

Community. Education

Transport. Public Space

Home. Residential

Health







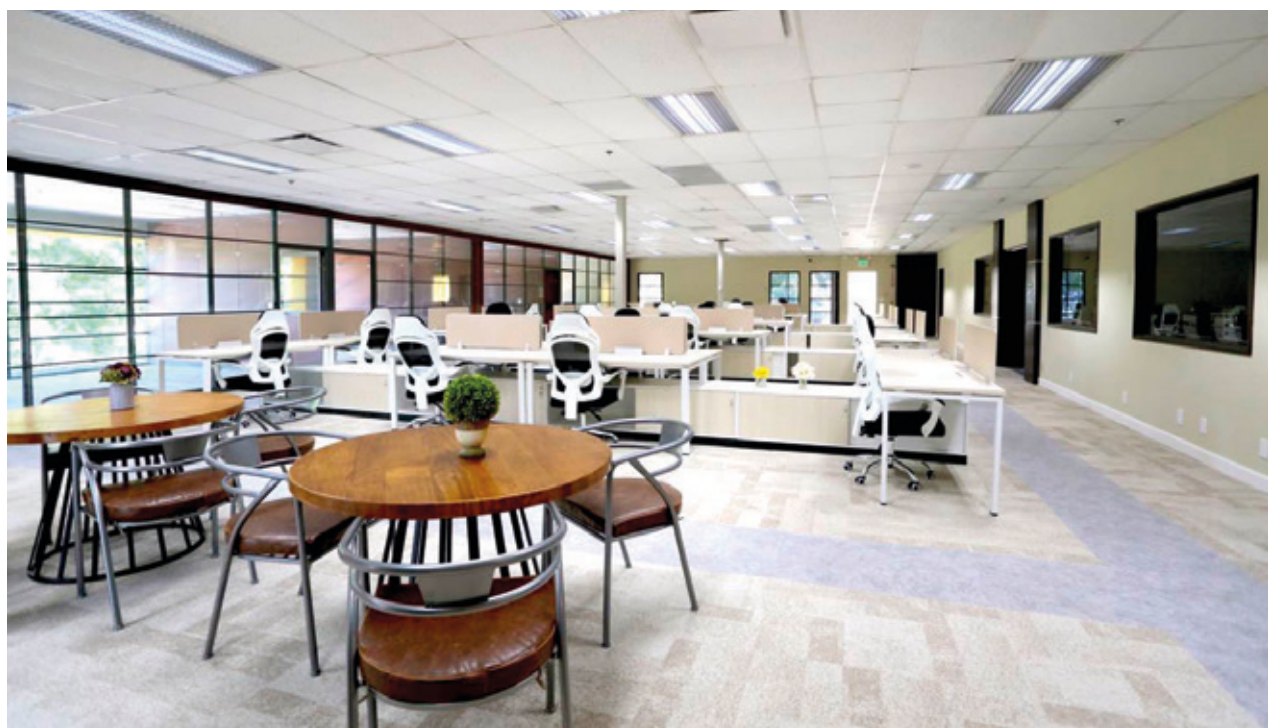
个性设计

# Project Cases 项目案例



58同城  
洛杉矶

58.com International  
Los Angeles





深圳  
盛世嘉创投资



Sun Boom  
Investment

Shenzhen





Features

## Plank Collection

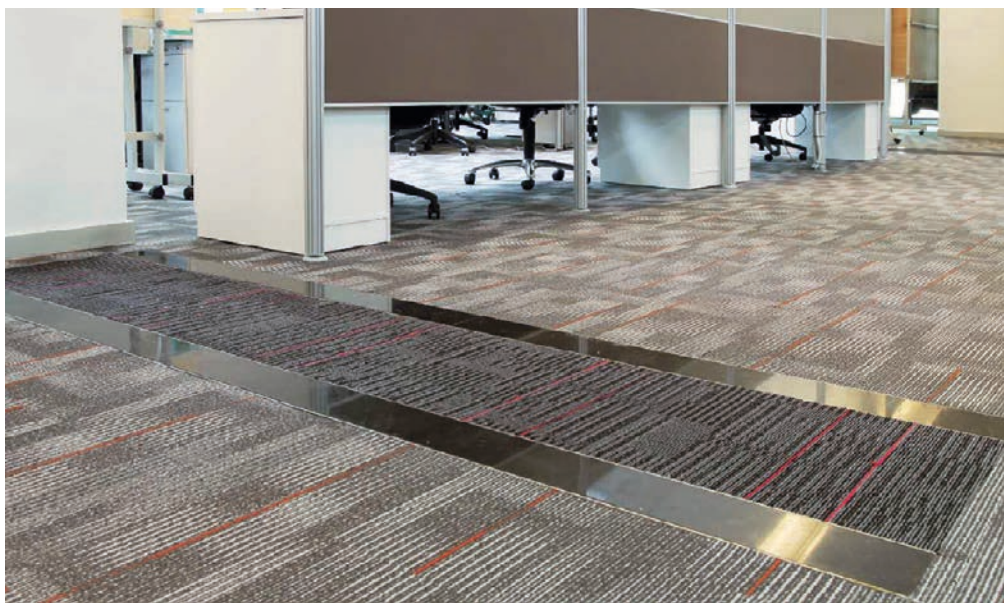
Resak  
10004





DHL  
马来西亚

DHL Malaysia





HKS  
香港衛視



HKS  
Hong Kong



# IBIS Hotel Kakarta

KAWUNG WAS A TRADITIONAL BATIK PATTERN

REVIVED WITH A STRAIGHT IDIOM IN MODULAR CARPET FLOORING

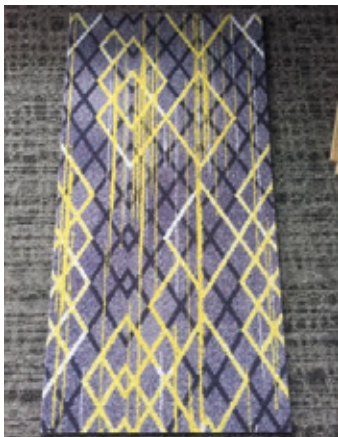
## KAWUNG

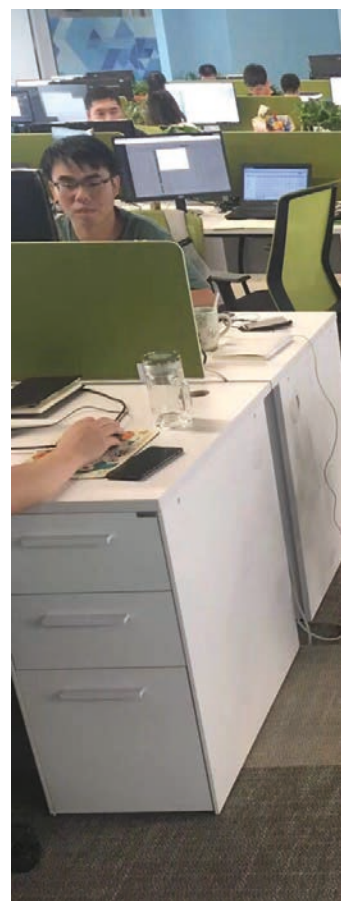
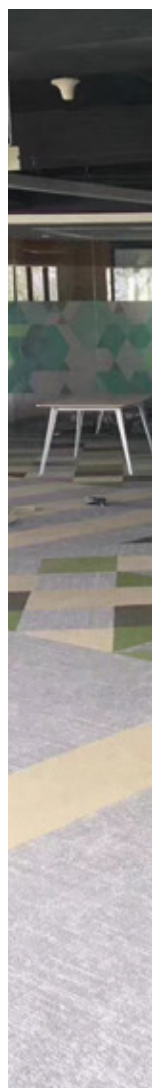
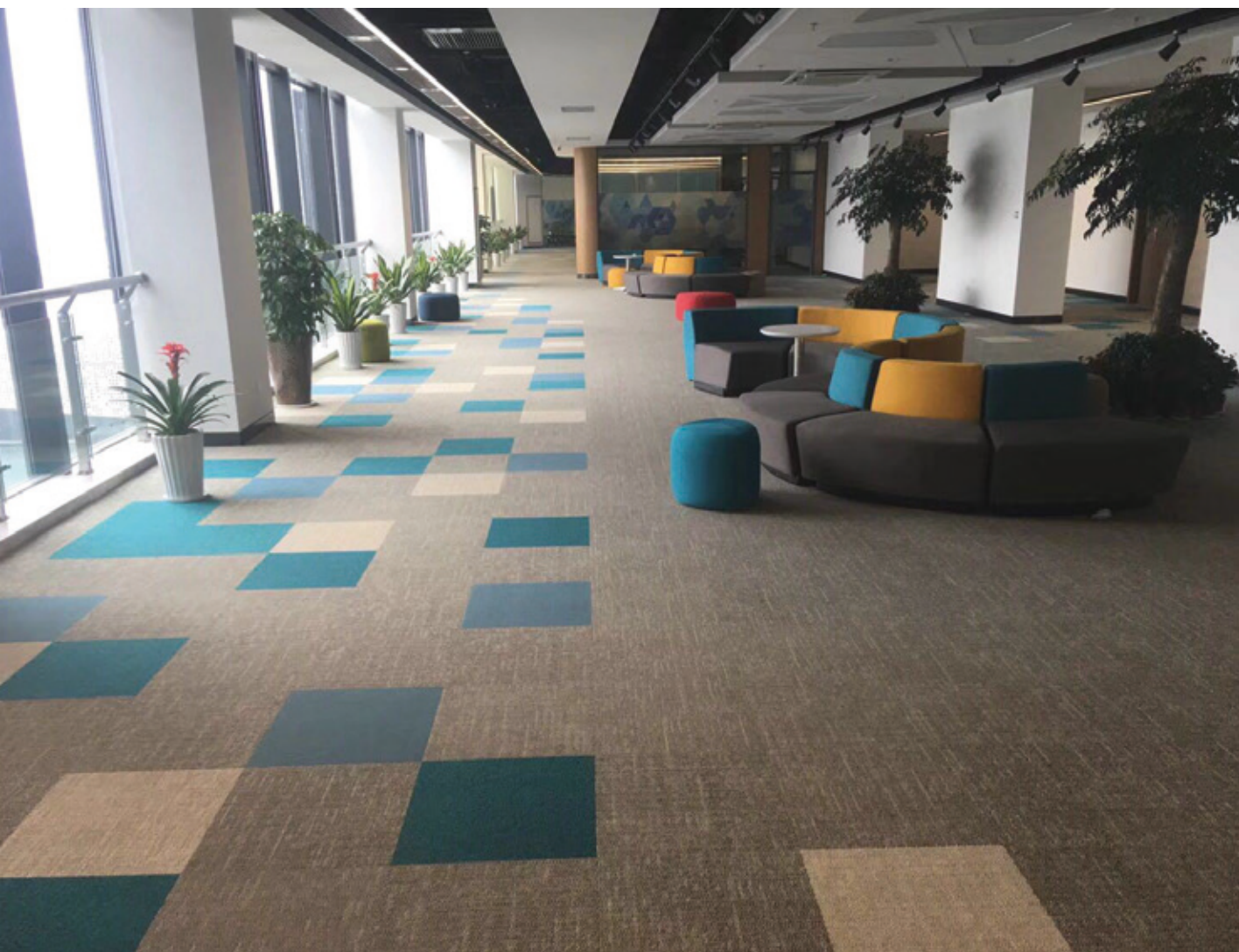


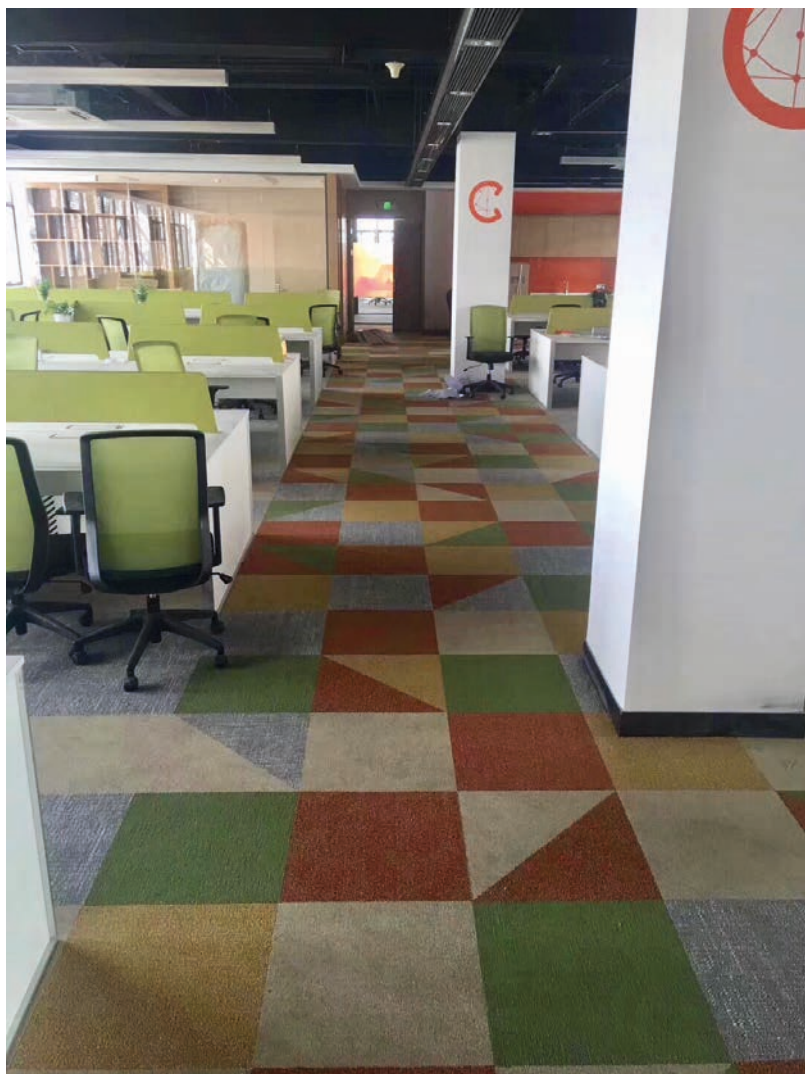
Newspec Carpet Tile With Cushion Back, Custom Batik Kawung

dalton  
Indonesia

# Hampton by Hilton







SNDA Network  
Office

Hangzhou  
China

# STARK CORP New York Office

New York  
U.S

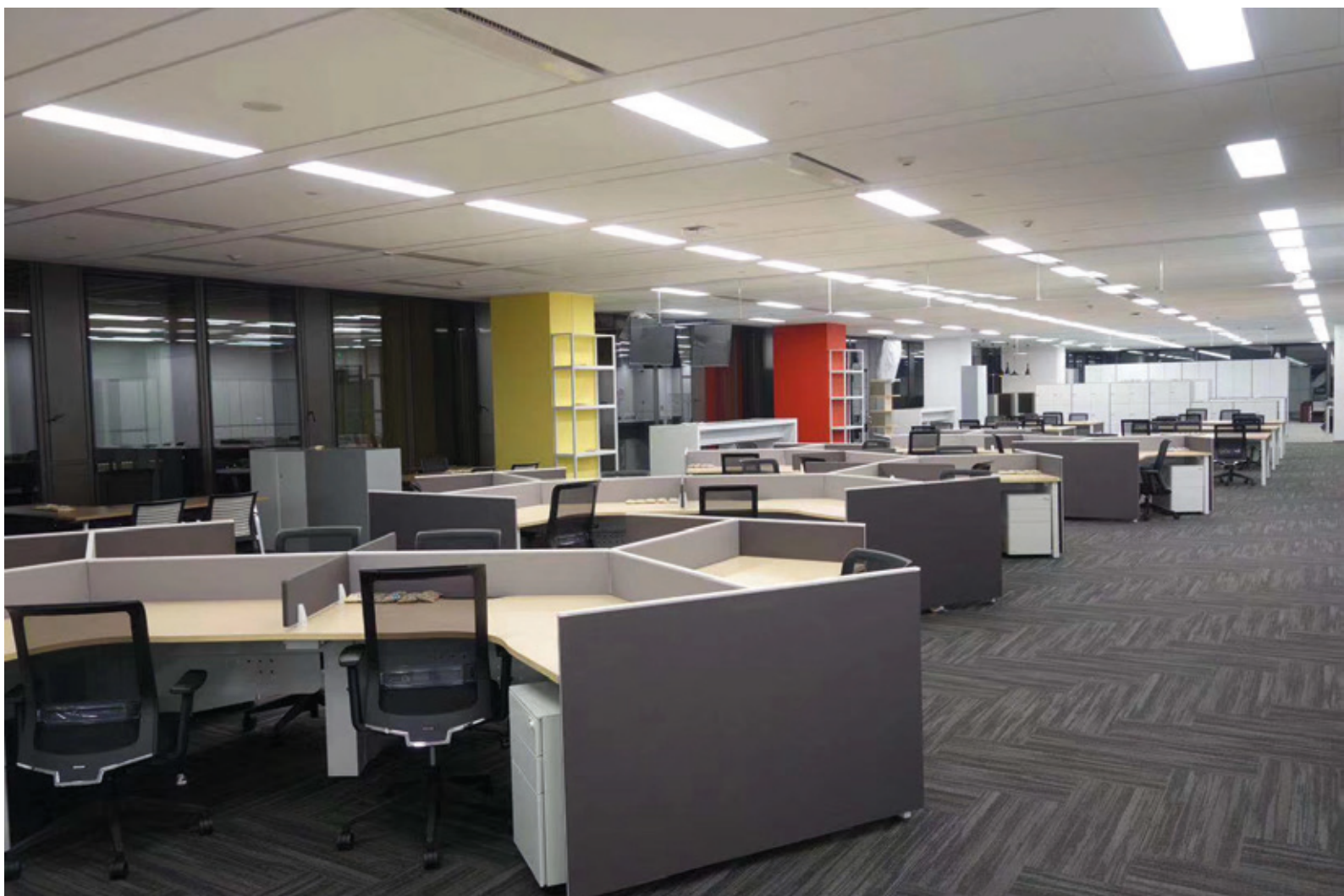








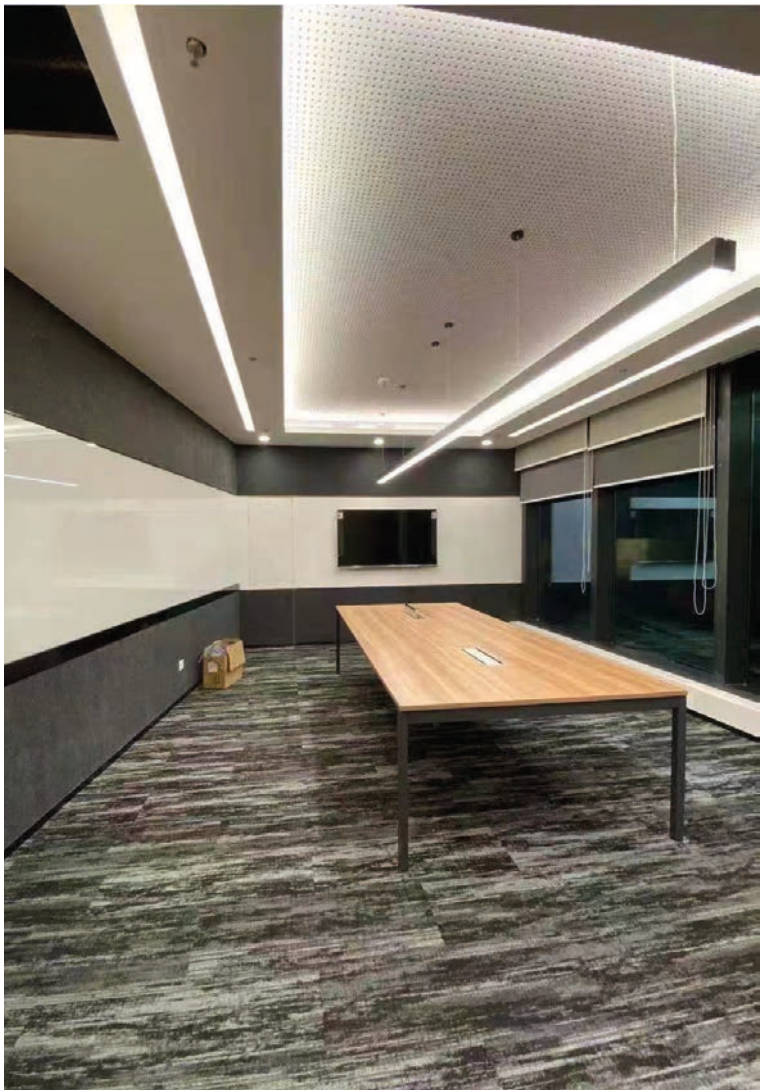
# Canon Beijing













**Maratti**

**Commercial Furniture**

**Guangzhou**













Tuopu Holding





# KangYe Media

## Shanghai





# China Mobile

## Nanjing







Pepsi  
Shanghai Office



# Office in Jakarta Indonesia




Design beyond limitation

[www.newspecfloor.com](http://www.newspecfloor.com)

Custom modular design provide limitless possibilities for your project.

Collections of playful modular carpet designed for your home or even workplace.

Stock of latest modular carpet designs to be ordered with expedited delivery.

  
Newspec  
Modular Carpet  
Potential LEED  
Credit Contributions

# Domotex 2018

INFINITE DESIGN IN A FINITE SPACE





# Sunon Furniture Shanghai







# Newspec Office

## Sydney

## Newspec China (Head Office)

399 YinDong South Road.  
Binhai Innovation Park. Yinzhou District.  
Ningbo, Zhejiang 315145

Tel  
+86 (574) 8901 6159

---

## Newspec Australia

C7/1-9 Pyrmont Bridge Rd  
Pyrmont NSW 2009

M  
+61 421 132 955

---

## Newspec U.S

16438 East Valley Blvd,  
La Puente CA 91744

Tel  
+001 (214) 505 0788

---

## Service Hotline

400 860 1069

[support@newspecfloor.com](mailto:support@newspecfloor.com)

[www.newspecfloor.com](http://www.newspecfloor.com)